

Supporting Schools. Investing in Our Future.



2024 Annual Report



Corvallis
Public Schools
FOUNDATION

Reflecting on the past year, we are incredibly proud of what we have accomplished, thanks to you, our community of supporters.

In this report, we hope you will see the tangible impact your generosity has on our students, educators, and community. Your gifts allowed us to award close to half a million dollars in Foundation-driven initiatives, creating opportunities for all students to find success.

Together, we empowered educators and students by investing in their ideas. We funded innovative projects that create a sense of excitement for learning, increase achievement and leadership, and foster connection and community. We continued to prioritize support for our students who are navigating homelessness, poverty, mental health challenges, and other barriers to education. And we doubled down on our investment in summer programming, serving twice as many students, and garnering statewide attention for the program's life-changing impact—keeping students engaged in school and on track to graduate.

None of this would have been possible without you. Your gifts are more than just a donation; they are the catalyst for these transformative initiatives. They are an investment in the success of our students, and the future of our community.

As we look to the future, we know that our schools are being asked to do even more with less as funding pressures increase. Yet, we are reminded that education is our most powerful tool for change, deserving of our investment. We are not only supporting students; we are cultivating the leaders, innovators, and changemakers of tomorrow.

We are profoundly grateful for your partnership in this work.

With gratitude,



Leslie Hammond
Chair of the CPSF
Board of Trustees



Angela Hibbard
Executive Director

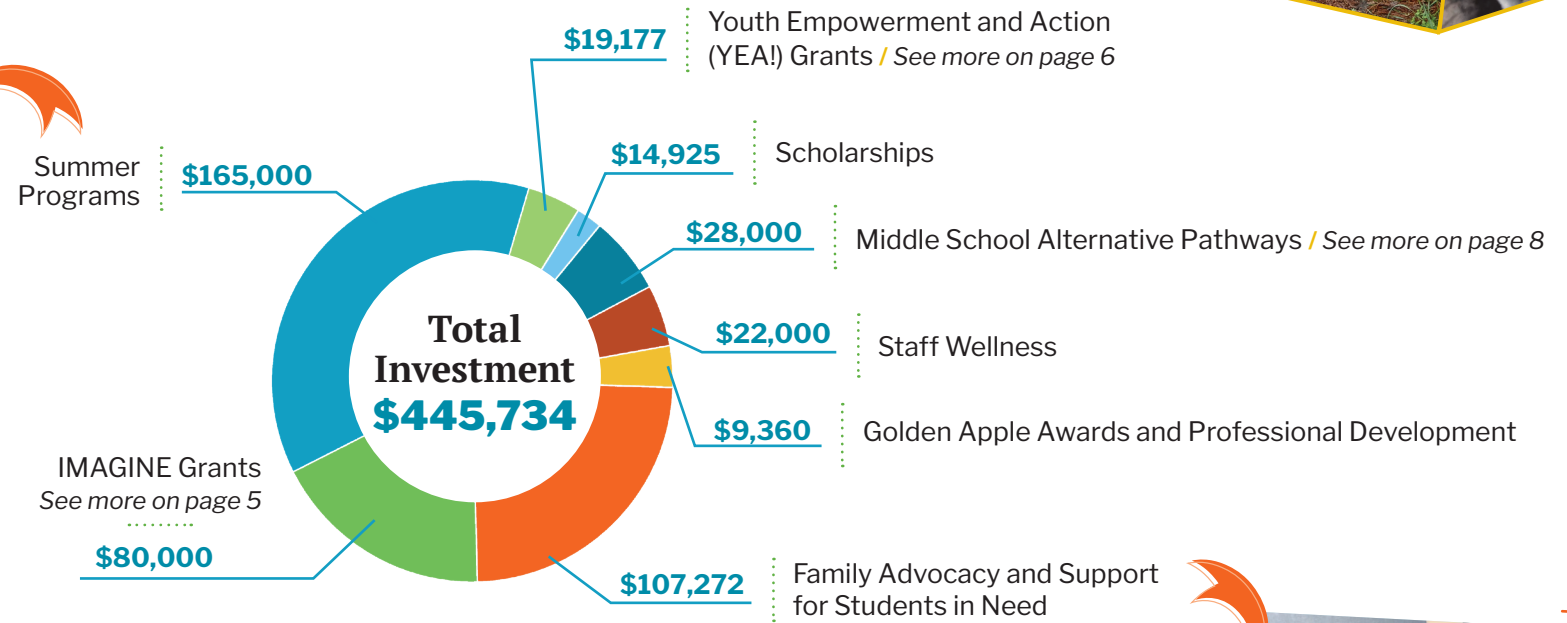


✦ **Our vision is that all students—
of every race, culture, socioeconomic and
family status, language, ability, gender,
gender identity, gender expression, ✦
or sexual orientation—graduate as
engaged community members, ready to
contribute to their fullest potential and
navigate the world's complexities.**



Grants & Awards in 2024

Thanks to the generosity of our community, we awarded close to half a million dollars in Foundation-driven grants and awards that prioritize *educational access, learning enrichment, and academic support.*



600 students from kindergarten to high school participated in Summer Programs.



96 high school credits earned



95% attendance rate

With your help, the Family Support Program served 380 Corvallis School District students identified as homeless, as well as many more who are navigating financial hardship and food insecurity. Your support provided vital resources so these students arrived at school ready to learn.



\$30,000 in gift cards provided for food, gas, and laundry services, helping families meet essential needs and reduce transportation barriers.



\$19,000 in emergency rental assistance helped prevent evictions for families when no other community resources were available, keeping families in their homes.



Over 300 emergency bill payments covered critical expenses like utilities, phone bills, car repairs, and more, ensuring stability for families in crisis.



80 scholarships for after-school care enabled families to access safe, enriching, and reliable after-school programs.



For greater details on these grants and awards visit: cpsfoundation.org

Growing a Math Mindset



Building confidence and community through family math nights

Success in math opens up a world of possibilities for our students' futures. Yet, for many, math can be intimidating—not just for students, but for parents and families as well.

Recognizing that not every family has the resources or support at home to grow their math confidence, this year the Corvallis School District piloted K-8 districtwide Family Math Nights. With funding from the Foundation, these evenings bring students, their families, and educators together to view math in a new light: one that's fun, engaging, and accessible.

“I appreciated seeing what kind of math work my student is doing in school, and getting ideas for supporting him at home. The emphasis on games and keeping it fun was valuable, as it makes for much more positive home experiences than worksheets!”
CSD Parent

Kim Johnson, the District's Middle School Coordinator, shares her passion: “The idea is simple, but powerful. By turning math into a game and involving families, we can boost students' confidence in their math abilities, reduce math anxiety, and promote a love for learning mathematics, ultimately improving student outcomes.”

Students and their families are discovering that math is not just about numbers and equations—it's about problem-solving, creativity, and teamwork.

“Family Math Nights brought over 150 families out to play math games together,” said Johnson. “Every family left with a packet of 10 activities (one for each week of the summer) specific to their child's grade level as well as receiving a game of UNO.”

Through academic support, enrichment opportunities, and ensuring educational access, CSD schools are growing a math mindset that will serve students far beyond the classroom. 🌱



“I found everything about the math nights helpful: one-on-one support, inclusiveness, my child getting to play [math games] with his peers and learn, and instruction on how to support his learning moving forward.”
CSD Parent

IMAGINE Grants

IMAGINE Grants are open to all Corvallis School District staff to support innovative projects that ignite real-world learning, advance equity, foster student achievement, and enhance overall well-being.



- \$5,000 / 2nd Annual Districtwide Art Exhibit: CSD pARTy! (Christa Schmeder)
- \$5,000 / Mountain View School Garden Rejuvenation Project (Michael Fischer)
- \$5,000 / Family Math Nights (Kimberly Johnson)
- \$5,000 / Vihuelas for Mariachi (Kathryn Kinney)
- \$5,000 / Reading Lounges (Keli Abbott)
- \$5,000 / Equity in Band (Matt Boring)
- \$4,920 / Women of the Woods Woodshop Camp (Aaron McKee)
- \$4,907 / Student Music Production Stations (Jens Lovtang)
- \$4,550 / Latin Voices of our Community (Carlos Valdes-Casillas)
- \$3,924 / Everyone Is An Author (Shayna Hicks) Photo 2
- \$3,500 / Sensory Path (Claudia Cano)
- \$3,000 / Lingo Lunch (Karrie Woodruff) Quote 7

- \$2,534 / WINGS Business/Job Site Supplies (Allison Patrick)
- \$2,500 / College Hill Yearbook Club (Anne Foltz)
- \$2,166 / Sixth Grade Science Field Trip (Alexis McQuillan)
- \$2,000 / STEM to Enrich Little Minds (Arianna Gonzalez-Cas) *
- \$2,000 / Arabic Culture and Language Club (Rabab Zghal Ep Khammar)
- \$2,000 / Kathryn Jones Harrison School Garden Revival (Amanda Tucksen) Photo 4
- \$1,901 / College Hill Weight Room Equipment (Jefferson Peak) Photo 6
- \$1,623 / Farm Fence After the Remodel (Cherie Taylor)
- \$1,500 / MMIWG2S (Missing & Murdered Indigenous Women, Girls, and Two-Spirit People) 5K Fundraiser (Julia Blue Arm)
- \$1,054 / Marine Science Matters! (Eva Riedlecker-Wolfe) Photo 3
- \$1,053 / SAFE Family Dinners (Jennifer Davis) Photo 5

- \$1,000 / Children's Books About Letitia Carson (Christy Koegler)
- \$1,000 / Math Tutors (Heathrina Stanfield)
- \$930 / T-shirt Printing Business (Cherie Taylor)
- \$985 / Aquaculture 2.0 (Jeremy Adams)
- \$850 / C.A.T.S. Club (Sarah Johnson)
- \$750 / Second Grade Field Trip to the Eugene Science Center (Irene French) *
- \$650 / College Hill Art Class (Drew Kelly) Photo 1
- \$588 / Animal Adaptations Field Experience (Emma Poff)

“ This grant helped to create a comfortable space—one that connects English learners to others, and one that fosters curiosity about other parts of the world. It has been a pleasure to watch students commune over lunch, develop friendships, and flourish in their new community. ”

Karrie Woodruff, Corvallis High School ELL teacher & IMAGINE Grant recipient

To learn more about our IMAGINE Grants visit: cpsfoundation.org/grants-awards/imagine-grants



Celebrating Excellence:

Congratulations to our 2024 Golden Apple Award Winners

Established by Mario Pastega in 1996, the Mario and Alma Pastega Golden Apple Awards celebrate and recognize exceptional Corvallis School District staff. Each year, CPSF honors three outstanding teachers and one classified staff member with these prestigious awards.



Golden Apple Award winners pictured alongside the Pastega family.

From left: Mieka & Viviana Bartee, Ken Pastega; **Ty Smith**, Cheldelin Middle School behavior specialist; **Kathleen Smith**, Linus Pauling Middle School orchestra and band teacher; **Dan Reynolds**, Mt. View Elementary School first grade teacher; and **Malia Hee**, Crescent Valley High School science teacher.

YEA! Grants

YEA! (Youth Empowerment and Action) Grants are designed to provide a unique platform for students to voice their ideas and drive positive change within their schools or the broader community. This year we funded 14 student-led projects for a total of \$19,177.

\$2,500 / Kicking for More Goals – Garfield Elementary School (Isaac Boyer) *Photo* 5

\$2,350 / Spartan Robotics Software Training Improvement Plan – Corvallis High School (Logan Quaka)

\$2,200 / Sports Equipment For Life Skills - Linus Pauling Middle School (Aaron Salmoran) *Photo* 3

\$2,109 / Cheldelin Mural – Cheldelin Middle School (Jayda Castillo)

\$1,875 / STEM Equity – Crescent Valley High School (Richard Chen) *Photo* 6

\$1,800 / T-shirts for Dual Immersion – Linus Pauling Middle School (Yoab Gonzales)

\$1,721 / Volleyball Fun – Garfield Elementary School (Lucy Washburn)

\$1,000 / CHS Cultural Week – Corvallis High School (Isme Quao) *Photo* 2

\$750 / Crescent Valley Model United Nations – Crescent Valley High School (Alex Gough)

\$710 / Native Restoration – Crescent Valley High School (Georgie Merback) *Photo* 1

\$670 / LGBTQIA+ Art Installation – Linus Pauling Middle School (Harriet Ward)

\$600 / “Engineering Together” | Bridge Building & Design Competition – Crescent Valley High School (Jesus Moreno Rangel) *Photo* 4

\$596 / FYRE – Franklin K-8 (Elvisa Faltesek)

\$295 / All-Artists Aquarium – Garfield Elementary School (Evie Wiman)

To learn more about our YEA! Grants visit cpsfoundation.org/grants-awards/yea-grants





“ High school students are in the process of creating identities, developing skills, and exploring their shifting sense of self. Songwriting can improve social engagement, and is also an art form which can be a vehicle for supporting students in mental distress. ”

Jens Lovtang, CVHS/CHS choir teacher & IMAGINE Grant recipient

“ I’ve always loved art. But I sometimes have trouble not letting myself enjoy it, and I get stuck doing one specific thing. This class has let me explore different mediums, and because of it, I’ve fallen back in love with the process of creating art. ”

C. Shutta, College Hill High School student

Creating a Brighter Future

Participation in the arts fosters student creativity, cultural expression, and a strong sense of community—all vital components of student success.

Over the years, thanks to the generosity of our donors, the Foundation has supported countless programs that ignite students’ creativity and engage their excitement for learning. Some recent highlights include funding instruments to support equitable access to music programs, supplying materials for our alternative high school’s first-ever art class, investing in student murals that inspire inclusivity and cultural awareness, and providing music production stations for students to craft and record their own music.

With the community’s continued support we can create a bright future for Corvallis students. 🌱



“ The results have been remarkable. Students with historically limited access to art earned elective credits and created personal sketchbooks filled with their own artwork, and for the first time ever, participated in the districtwide art show held at Corvallis High School. ”

Drew Kelly, College Hill High School special education teacher & IMAGINE Grant recipient

“ We have evidence that students who participate in programs such as music have far greater academic outcomes than those who don’t... students who have been traditionally underserved are often relying on old and broken-down instruments that limit their ability to play and to improve their skills. The CPSF grant allowed CHS to purchase instruments that will be used by multiple students over decades. ”

Matt Boring, Corvallis High School principal





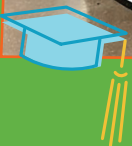
A Pathway to Success

Foundation grant fuels transformation in middle school alternative education

Middle school can be tough. It can be a difficult transition for many students, even at the best of times. And the stress and trauma of the pandemic have only made it harder—especially for students already facing significant challenges.

Many students really struggled—academically and behaviorally—when they returned to in-person learning. In response, the Corvallis School District launched its middle school Alternative Education Pathway programs. These programs are designed to support students facing mental health challenges, food and housing insecurity, and other barriers to learning. For these students, the impact is nothing short of magic.

“Students often carry trauma that has impacted their school experience,” says Elizabeth Wieland, an educator in Cheldelin Middle School’s alternative education programs. “Our student-centered programs allow kids



“

With every dollar we spent, we brought into our program the necessary items to re-engage the hearts of our students. Without the grant money, NONE of the successes would have been possible. We needed a boat to keep us all safe during this first year at sea, and you provided the vessel.

Jillian Snell, Middle school educator

”

“

My mom asked why I had been going to school more lately, and I told her about Academy Bucks and the [student store] business. Some days I don’t want to go to school, but then I remember my goal and it gets me there.

Middle school student

”

to learn and grow in a trauma-informed setting that celebrates the whole child.” Educators like Elizabeth are the magic makers—they meet students exactly where they are by offering targeted support to help unlock their potential, building lifelong skills, and eventually reintegrating into the larger school community.

“Our goal is to ensure that students feel seen and valued, and to know they belong,” says Wieland.

A \$28,000 grant from the Corvallis Public Schools Foundation provided the essential resources needed to help make the magic happen: funding for community-building exercises, service projects, wellness experiences, and entrepreneurial opportunities like operating a student-run store where students learn business skills such as budgeting and customer service.

“I’ve seen students who started the year with very few positive associations with school complete the year as leaders, mentors, and artists proud of their skills,” shares Wieland.

Thanks to the Alternative Education Pathway programs, for many students, middle school is not so tough anymore. 🌱



Thank you to our Sponsors

We recognize the invaluable contributions of our Hands Across Corvallis and Summer Programs sponsors for their generous support of Corvallis schools.



Our Finances in 2024

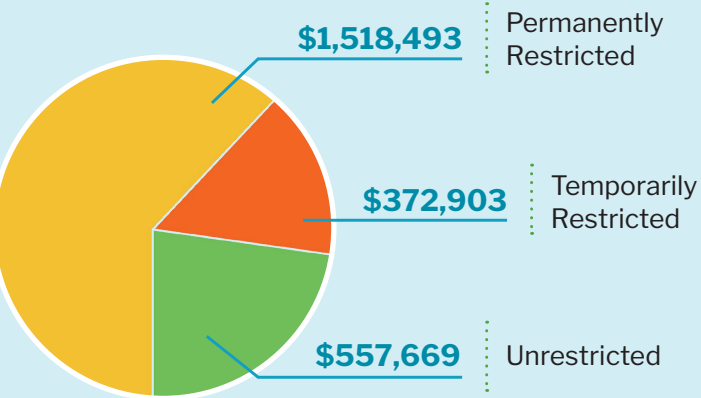
Covering financials and activities from July 1, 2023 to June 30, 2024.

\$2,449,065 Net Assets

\$1,879,386 in Endowments



Distribution of Net Assets: \$2,449,065



- Foundations and Other Nonprofits: **\$766,124**
- Households and Individuals: **\$354,305**
- Business and Government: **\$169,369**
- Fundraising Event: **\$155,688**

Net Assets

Cash and Cash Equivalents:	\$482,418
Investments:	\$1,966,647
Total Net Assets:	\$2,449,065

For a full financial statement, please contact us at 541-757-5857.

Endowments in 2024

Our endowed funds are established by community members who want to provide sustainable support for our mission. Each fund is designated based on what a donor cares most deeply about: support for enrichment activities, art and STEM programs, students in need, scholarships, and more.

Total \$1,879,386 as of June 30, 2024

- » Anna J. H. Fang Scholarship for Journalism and Communication, **\$53,734**
- » Anna J. H. Fang Scholarship for STEM, **\$51,669**
- » Barbara E. Fry Endowment, **\$270,002**
- » Better World Endowment for Equity and Inclusion, **\$107,474**
- » CHS Class of 1958 Legacy Endowed Fund, **\$81,656**
- » CHS Class of 1966 Student Participation Fund, **\$37,616**
- » Corvallis High Schools Golf Committee Fund, **\$96,412**
- » David Zajicek Golf Scholarship Endowment, **\$22,777**
- » Dennis Staats Scholarship for the Arts, **\$31,787**
- » Doris L. Meyers Endowment, **\$116,341**
- » Eric Gorski Multimedia Scholarship Endowed Fund, **\$20,701**
- » Harold and Alma Moldenke Outdoor School Endowment, **\$26,606**
- » Hetherington Family Fund, **\$18,702**
- » Jared Pastega Endowment, **\$61,857**
- » The Joe Malango Endowment for Theatrical Arts, **\$35,629**
- » **New!** K.C. Bacon Fund, **\$25,578**
- » Kenneth J. Stevenson Memorial Endowment, **\$29,334**
- » Lynn Lahey Somos el Futuro Scholarship, **\$14,977**
- » Mario D. Pastega Golden Apple Awards Endowment, **\$33,116**
- » Mario and Alma Pastega Professional Development Endowment, **\$87,688**
- » Midge Mueller Fund, **\$56,621**
- » Mid-Valley Bicycle Club Bike Safety Endowment, **\$43,448**
- » Olaf "Ole" Hedstrom Memorial Fund, **\$12,689**
- » Susan Small Hall Scholarship Endowment, **\$38,671**
- » Victoria Eastwood Memorial Scholarship, **\$23,571**
- » Yvonne Thomas Fund, **\$34,267**
- » Zach Peters Memorial Fund, **\$51,213**
- » Zel S. Brook Art Endowment, **\$29,564**
- » Zoe A. Silbernagel Endowment for Art, **\$23,495**

To learn how you can create a lasting legacy by establishing an endowed fund, or including CPSF in your planned giving, contact us at 541-757-5857.



From left to right: Founder of the K.C. Bacon Fund, K.C. Bacon; Corvallis High School Principal, Matt Boring; and CPSF Executive Director, Angela Hibbard



Honoring Our Donors

We are grateful for the generosity of all of our donors, including anonymous, in-kind, and other gifts not included here. Every gift makes a difference!

Gifts received July 1, 2023 to June 30, 2024

- \$10,000+** — Jan Babbitt and Don Mason • Kevin Bacon • Benton Community Foundation, Fred and Mary Brauti Donor Advised Fund • Benton Community Foundation, Marilyn J. Starker Community Giving Fund • Bessemer Giving Fund • Curtis and Deborah Rose Family Charitable Fund • Franklin Conklin Foundation • Brian and Jennifer Frohring • HP • Mario and Alma Pastega Family Foundation • Samaritan Health Services • Sissel Family Impact Fund • Steven and Linda Sogge • Starker Forests • Toni Tinch
- \$5,000-\$9,999** — Benton Community Foundation, Uerlings Family Fund • Charlotte and Norman Codo Charitable Trust • Gene Haas Foundation • Julieann Lear • Lois Malango • Ollerenshaw Wealth Management • OSU Folk Club Thrift Shop Foundation • Pacific Power Foundation • Larry and Cathy Passmore • Tim and Allison Sissel • Selma Starns
- \$2,500-\$4,999** — Dan and Wanda Arp • William Ayres • Benton County Schools Credit Union • Zel Brook • Citizens Bank • Wolfgang Amadeus Dengler • DLR Group • Fortis Construction • Gerding Builders, LLC • Robert Henderson • Ben and Heather Herman • Ironhead Roofing • Barbara Lachenbruch and Everett Hansen • Les Schwab Tire Centers, 9th Street • Lourdes Martinez • Microsoft Corporation • Lina and Justin Soares • Town & Country Realty • Jo Anne Trow • Rick Wallace and Patti White • Gordon and Abby Zimmerman
- \$1,000-\$2,499** — Apple • Becky Bangs • Benton Community Foundation, Mid-Valley Bicycle Donor Advised Fund • Benton County Cultural Coalition • Doug and Kerry Boysen • Matthew Campbell and Gabrielle Snyder • Cheryl MacLeod and Susan Si Giving Fund • Church of the Good Samaritan • Common Fields • Corvallis Dental Group • Corvallis Kids Pediatric Dentistry • Corvallis Pain Management • Carole Cotham • Judy and Roland de Szoeko • John and Ellie Erkkila • Lisa and Eddie Frothingham • Susan Gardner-Dunlea and Tim Dunlea • Troy Garrett and Sheila Mulligan • Gatorade Play It Forward Fund • Gillott Home Team • Michael and Sheila Goodwin • Becca Gose • Craig and Barbara Gray • Sarah Greene and Chris Kiilsgaard • Lauren Gwin and Clinton Epps • Mindy Hamlin and Kenneth Abbott • Angela and Paul Hibbard • IBEW Local 280 • Doug and Liane Ingalls • Iron Head Roofing • Jacobs • Anantha Javali and Chinmayi Anantha • Mark Keppinger and Jean Nooy • Kernutt Stokes • Carol Kronstad • David and Susan Livingston • Kandi Maestri • Bonnie Morihara • Linda and John Myers • Margaret Niess • North Point Dental Group • Pastini, Corvallis • Kirtkumar and Taramati Patel • Cathryn and Steven Peters • Robert and Susan Poole • Kenneth Provencher and Karen Hooker • James and Lois Rawers • Ed Ray • Michael and Elene Sheets • Bond Starker • Stefni Stephens • Lawrence Stover • Sheryl Stuart • Janet and Jim Swinyard • Rick and Ginny Taylor • Keith and Vickie Taylor



The Corvallis Public Schools Foundation allowed us to support the Jared Pastega Endowment so we could recognize an outstanding person and support important initiatives that promote education.

Bill & Kathy Ten Pas





Two of CPSF's founding Trustees, Gretchen Morris and Tony Van Vliet, were honored at the 2024 Hands Across Corvallis fundraiser

Teal Artist Cooperative • Gary and Yvonne Thomas • Biff and Maret Traber • Tye Wine Cellars • Tony Van Vliet • John and Suzanne Van Zanten • Vanguard Charitable, Ward Family Fund • Wenaha Group • WL Construction

\$500-\$999 — Altrusa International Foundation of Corvallis • Peter and Julianna Betjemann • Susan Bliss • Matt and Wendy Boring • John and Vicki Buckhouse • Judy Ann Butler • Shirley Byrne • Patty Brown, Cadwell Realty Group • Mitch and Marlis Canham • Marjorie Cannon and Hugh Moore • Virginia Capan • Thomas and Denise Cardinali • Joe Catania and Peggy Dolcini • Tyler and Amy Childers • Laura Chisholm and Patrick Garrison • Stella and Jim Coakley • Relan Colley • Jenna and Ron Collins • Jana Compton • Joan Corcoran • Scott Crane • Stacy and Ted Davis • Devco Engineering • Dickerhoof Properties • Thomas Dietterich and Carol Rivin • Edward Jones Investments • Nina Erlich-Williams and Severn Williams • Sondie and John Frus • Kelly and Jennifer Gallagher • Bob and Chris Gerding • Taylor and Travis Gilmour • Eric Gower • Brian and Jenny Gruenemay • Guempel & Hann Physical Therapy • H & M Olds Trust • Jennifer Hamilton • Greg and Joan Hayes • Frank and Kayla Heresco • Robert Hess • James Hildenbrand and Joyce Neeley • Dieter and Inge Hoehn • Kathleen Hutchinson • James and Sara Ingle • James Jacobson • Terese and Kevin Jones •

Justin Kruse State Farm • Ari Kahan • Mark Kalmar • Stephen and Kathleen Lawton • Gabriel Ledger • Lindsay V. Fowkes Foundation • Ronald and Ann Marek • Barbara Marraccini • Anna and Adam May • Megan McClelland and Roger Samelson • James and Susan McMahon • Modern Analytics Corporation • Arthur and Jean Morgan • Alice Morrow • Northwestern Mutual - The Dragoo Financial Group • Northwestern Mutual Foundation • Nelda Noss • Ryan and Windy Noss • Oregon Coast Transporters • Oregon State Credit Union • Oregon State University • Oregon State University College of Education • R3 Engraving & Signs • Mark and Alice Rampton • Restore Physical Therapy • Gwenda Rice • Blake and Connie Rodman • Roger and Judy Rosenthal • Kathleen Ruyts • Evan and Erin Scheessele • Glen Silbernagel • Melissa Sollitt • Stephanie Spann • Elizabeth and Joey Spatafora • Stover Neyhart Yee & Co. • Steven Strauss • Suda Suebsang • Peggy Sweet • The Corvallis Clinic • Thomas and Gloria Thetford • Karen Timm and Brad Smith • Tom Laster DDS • Tominey Family • Upper Hand Orthopaedics • Valley Eye Care • Visiting Media • Thomas Warren • Bruce Weber • Mariol Wogaman • Bryan and Maria Wright • Ray Yagloski

\$250-\$499 — Vincent and Autumn Adams • Larissa Balzer • Derrith Bartling • Dusty Berggren • Nancy Bryant • Brendan and Catherine Buckley • Noah and Whitney Buckley • Marty Cahill •



Middle school students engaged in math lessons during donor tour of Summer Programs

Rebecca Camden • Marilyn Carl • Susan F Chelini • Josh and Ashley Cooper • Herb and Linda Crew • Evashevski Elliott PC • Kathy and Ed Feser • Anne and John Filson • First Congregational Church of Corvallis Oregon, Women's Fellowship • Martha Fraundorf • Elizabeth French and Jesse Chaney • Marc and Hannah Gascho Rempel • David Gazeley • Mark and Leanne Giordono • Jim and Marion Godfrey • Dianne Hart • Healing Motion Physical Therapy • Deborah Henich • Peg Herring • Steve and Jodi Hoelscher • Nichole Hoffman • Courtney Holgate-Champney and Jon Champney • Jason and Kelly Hower • Aimee Huff • Bill and Jennifer Humphreys • Jennifer Irvine • Donna Keim • Anthony Kent • Don and Laura King • Nicole and Brian Kruppa • Arnold Larson • Tim and Julia Maloney • Elaine and Gary Markley • John and Linda Martinsen • Kevin Matsuba • Marvin and Shirley McDonald • Lon and Alexis McQuillan • Paul and Emily Miller • Melissa Miller • Michele Mincinski • Susan Nevin • Jeffrey and Alice Nielsen • Paul Nietfeld and Nancy Whitcombe • Jun Niu • Kim Patten • Ron Perry and Laurie Labbitt • Personal Touch Car Wash • Milton Plocher and Nancy Ashby • Sandra Potter • Elizabeth Raney • Resilience Physical Therapy • Boutros Rizk • Larry and Susan Rodgers • Steven and Karen Rosenberg • Robin Rybarczyk • Kim Saam and Chris Kratochvil • Tricia Santrock • Bettina Schempf and Jeff Miller • Thomas and Gina Shellhammer • Tammy Skubinna • Marian and Charles Smith • Sarah Spangler • Sam Stern and Beth Rietveld • Stover, Evey and Jackson • Stephen and Cheryl Stratton • Synergy Security Solutions • Sue Tappeiner • Matthew Thornberry • Julia Turner • Lisa Underwood • UPS Foundation • Heidi and John van Zanten • Freda Vars • Brad and Nancy Webster • Mark and Heidi Weisel • Luhui Whitebear • Workday • David and Jan Zajicek



By supporting the Corvallis Public Schools Foundation we are committed to improving the educational opportunity and experience for all students. We are making an investment in our future!

Tim & Allison Sissel



Tributary gifts are a meaningful way to honor or memorialize a loved one, or recognize a favorite educator.

In honor of — Alexis McQuillan • Angela Hibbard • Bob and Judy Myers • CHS Class of '52 • CHS Class of '68 • Cleo Sandler • Coach Mark Hanson • CPSF Staff • CV Robotics coaches Tanya and Rob • Dakota Fortenberry • Daniel Mikula • David Germain • Dr. Sami Al-Abdrabbuh • EJ Frus • Eliana Sherman • Elizabeth Wyatt • Emily Barton • Emily Wisniewski • Erin and Evan Scheessele • Gretchen Morris • Kristin Boock • Lillie Epps • Liv White • Luis and Elsa Rondon • Melissa Staughan • Mikell Rivero • Peggy and Scott Spiegelberg • Richard Behn • Richard Wallace • Rodney Post • Salam Althahabi • Shahnaz Sahnaw • Susannah Jane Epps • Terese Jones • Tony Van Vliet

In memory of — Bill Corcoran • Brent Montgomery Babbitt • David Osgood • Dennis Staats • Dustin Lee Canham • Gloria Buckley • Jared Pastega • Jerry Colonna • Jessica Pliskin • Joe Malango • Kate McNutt • Lindsay V. Fowkes • Luis Alberto Rondon Marquez • Marilyn Roland • Marjorie Ann Rackham • Matthew W Stephens • Tom Wogaman • Zach Peters • Zoe Anne Silbernagel

Indicates current PIE (Partners In Education) donors whose monthly contributions provide sustainable support for our schools. Learn more at cpsfoundation.org/PIE



Join us!

Hands Across Corvallis Benefit Event

Thursday, January 30, 2025

7:30 – 8:30 a.m. Corvallis High School

Call 541-757-5857 or cpsfoundation.org to register



Scan here to make a gift or learn more.



The content of this report reflects activity from July 1, 2023-June 30, 2024.

Sincere efforts have been made to ensure the accuracy of this report, including names and donations. If corrections are needed, please contact us at 541-757-5857.

Board of Trustees

Leslie Hammond, *Chair*
Mindy Hamlin, *Past Chair*
Jehan Jabareen, *Secretary*
Mark Goheen, *Treasurer*
Wanda Arp
Mamta Chowdhury
Jason Dorsette
Kevin Dougherty
Scott Elmshaeuser

Nina Erlich-Williams
Susan Gardner-Dunlea
Elisia Harder
Amanda Henevoy
Michele Mincinski
Julie Penry
Gwenda Rice
Monte Smith
Rick Wallace

Ex Officio

Ryan Noss, *Superintendent*
Luhui Whitebear, *School Board Liaison*

Staff

Angela Hibbard, *Executive Director*
Erika Seirup, *Community Engagement Manager*
Carla Callahan, *Accounting Specialist*